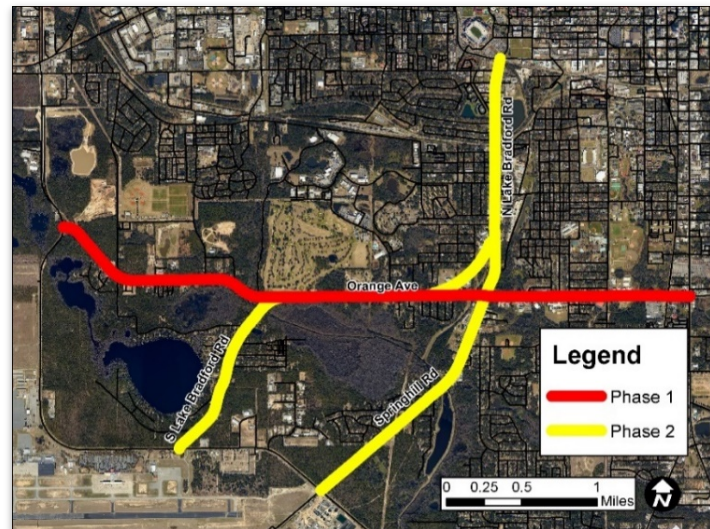


Open House for the Southwest Area Transportation Plan

The purpose of this Open House is to provide an additional opportunity for citizen input on potential alternatives on Springhill Road (Capital Circle SW to Lake Bradford Road), South Lake Bradford Road (Capital Circle SW to Orange Avenue), and North Lake Bradford Road (Orange Avenue to Stadium Drive).

To date, we have received input on:

- Improving Student Safety
- Bike and Pedestrian Improvements
- Access Management
- Neighborhood Protection
- Improved Transit Service



Any questions, clarifications, or comments are welcome including additional comments on the above categories. This will be the last public meeting on the Southwest Area Transportation Plan for public input so please come join us, and let us hear from you.

Open House Information

Location: Pineview Elementary School
2230 Lake Bradford Rd.
Tallahassee, FL

Date: Tuesday, August 6, 2019

Time: 5:30 pm to 7:00 pm

Public participation is solicited without regard to race, color, national origin, age, sex, religion, disability, income, or family status. Persons who require special accommodations under the Americans with Disabilities Act or persons who require translation services (free of charge) should contact the CRTPA at (850) 891-8630 at least seven (7) days in advance of the meeting of interest.

Previously Gathered Input

Phase 1: Orange Avenue

Comments received regarding Orange Avenue included:

- *Continuous bike facilities and sidewalks are needed throughout the area.*
- *Improve and evaluate pedestrian safety and accessibility, especially near schools and in areas of high traffic.*
- *Connect the St. Marks Trail to Orange Avenue.*

The Florida Department of Transportation (FDOT) has begun a Project Development & Environment (PD&E) study for Orange Avenue to evaluate the corridor for improvements such as four laning, intersection improvements, medians, bike lanes, and more. We will be providing local input collected during Phase 1 for this PD&E study.

Phase 2: Springhill Road, South Lake Bradford Road, North Lake Bradford Road

Comments received regarding Springhill Road, South Lake Bradford Road, North Lake Bradford Road included:

- *Improvements and beautification to North Lake Bradford Road.*
- *Added sidewalks and bike facilities to South Lake Bradford Road.*
- *Maintaining community character and slowing speeds on Springhill Road.*

Blueprint IA will take the input gathered during the Southwest Area Transportation Plan, and the alternative typical sections developed for these corridors for further refinement and consideration during their Airport Gateway Project, which will begin in winter 2019/2020.

Next Steps

Compile all the analyses, input, and alternative typical sections in four individual corridor reports for adoption by the CRTPA and Blueprint IA in September 2019.

Project Team Contact Information

Capital Region Transportation Planning Agency (CRTPA)

- CRTPA Contact: Jack Kostrzewa
- Phone: 850-891-8625
- Email: john.kostrzewa@crtpa.org